

Introduction.

Thème et Variations.

Luigi Legnani, Op. 224.

Revised and Fingered by Arling Shaeffer
and performed by him with great success.

Guitar.

Largo.

Introd.

Bar 3rd Pos.

7th Pos.

Bar 8th
7th Pos.

8th Pos.

Moderato.

cresc. 3rd 5th Pos.

Theme.

Var. 1.

Bar 5th

Bar 3rd Pos.

Bar 5th

10th

Bar 10th Pos.

Bar 3rd

Fine.

Bar 2nd

D.C. al Fine.

Poco piu lento.

Var. 2.

3rd Pos.

Fine.

Bar 3

D.S. al Fine.

Var. 3.

Bar 8th

Fine.

Var. 4.

Bar 3rd Pos.

5th Pos.

3rd stg.

Bar 2

5th Pos.

5th Pos.

Gstg.

7th

D.S. al Fine.

Andante.

5th Pos.

Bar 5th

Bar 3

Bar 1st

Bar 1st Pos.

Bar 3rd

Bar 3rd

Bstg.

3rd Pos.

Bar 1st Pos.

12

Bar 1st Pos.

Bar 2 Pos.

Bar 4th Pos.

Gstg.

4th Pos.

12

2nd Pos.

7

Bar 5th

3rd

1st

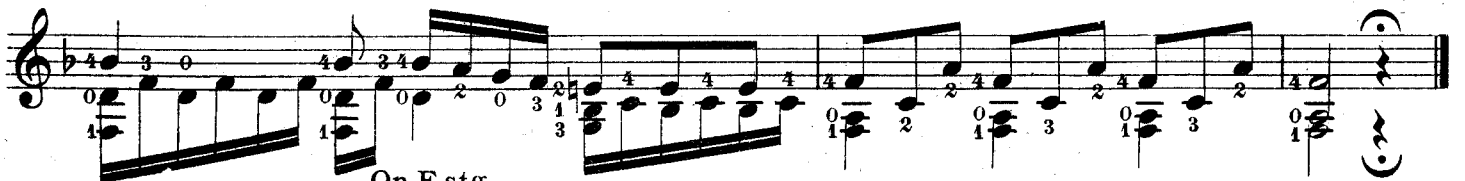
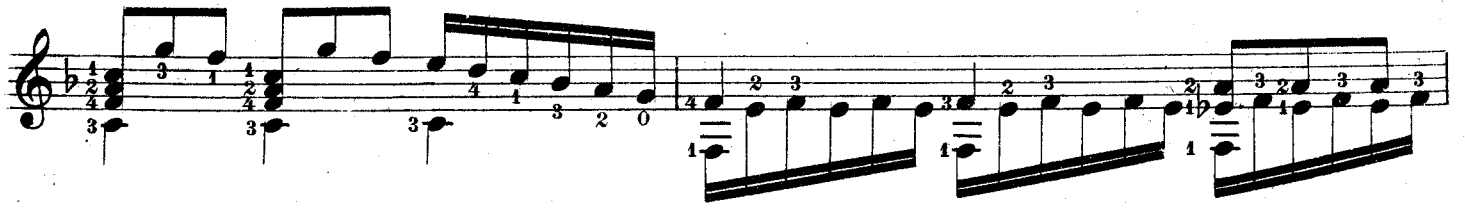
Bar 5th

Bar 6

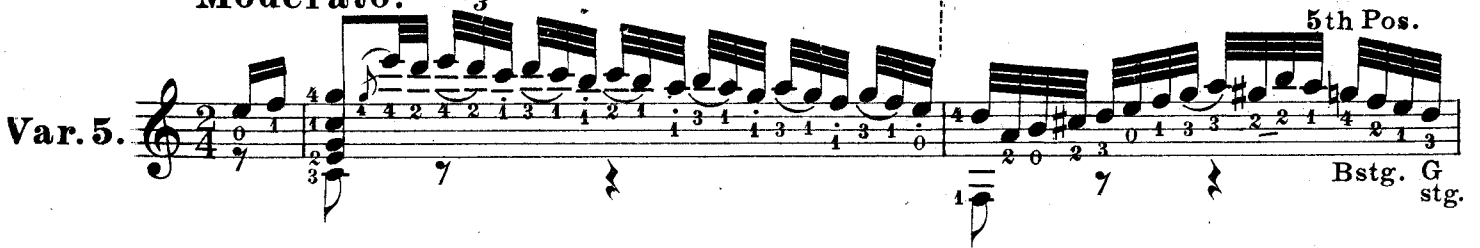
3rd

3rd Pos.

Bar 3rd.



Moderato. On Estg.



Bstg. G stg.



Estg.



Bar 5th..... 6th Pos.....

5th Pos. 4th Pos. 3rd Pos.....

3rd Pos. 7th Pos.....

5th Pos. Bstg. Gstg.

rall.

Allegro.

Finale.

Musical staff with treble clef, 1/4 time signature, and various notes and rests.

Musical staff with treble clef, 1/4 time signature, and various notes and rests.

Musical staff with treble clef, 1/4 time signature, and various notes and rests.

Musical staff with treble clef, 1/4 time signature, and various notes and rests.

Musical staff with treble clef, 1/4 time signature, and various notes and rests.

Musical staff with treble clef, 1/4 time signature, and various notes and rests.

Musical staff with treble clef, 1/4 time signature, and various notes and rests.